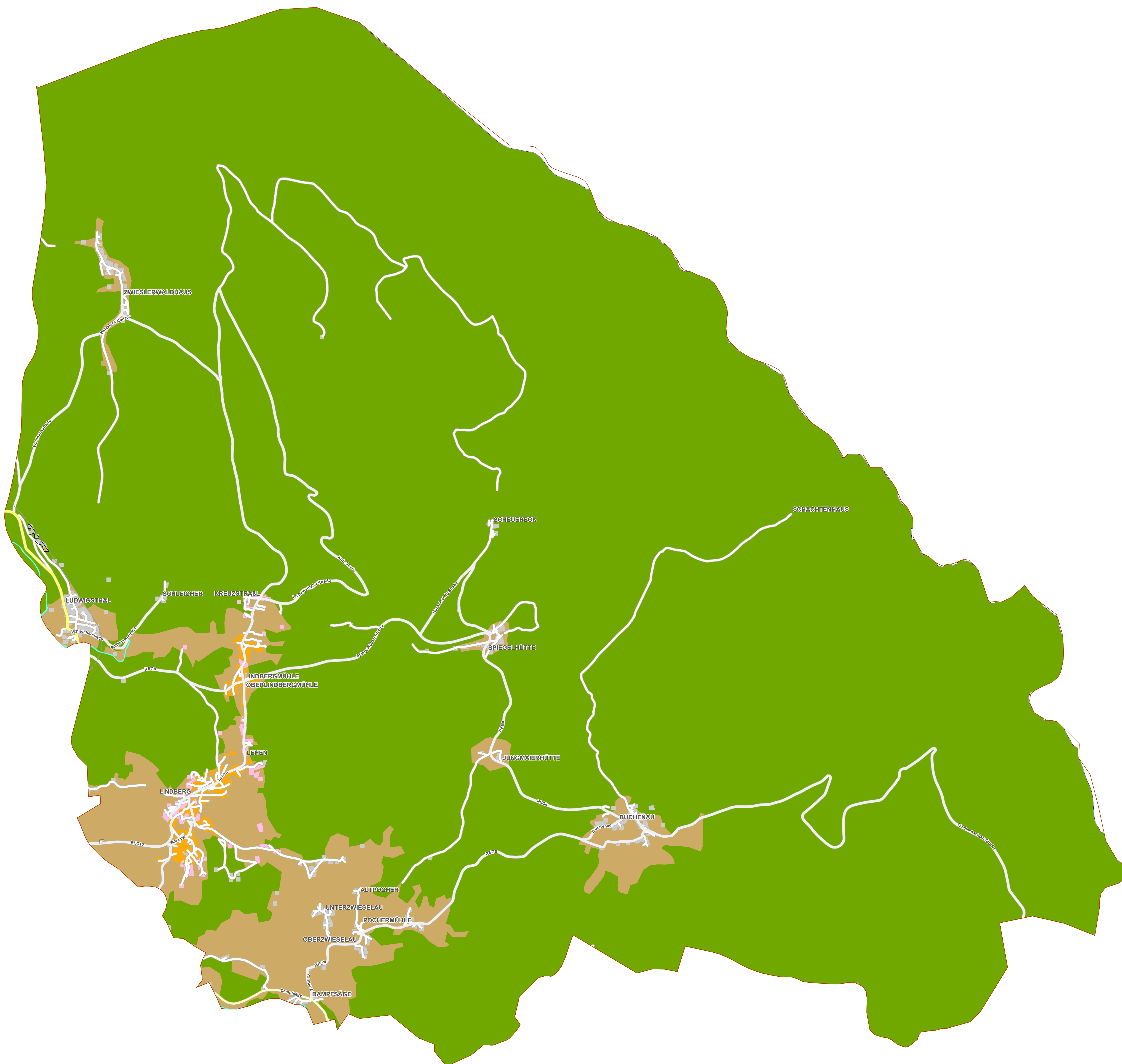


Breitbandversorgung Lindberg






Deutsche Telekom Technik GmbH
Darstellung Ist-Bandbreite am Hausanschluss

Bereiche

 Nahbereich

Festnetzversorgung

down-/up-stream in KBit/s

-  <16000/<2000
-  min. 16000/2000
-  min. 30000/bis zu 10000

Geo Street

-  Gewässer
-  Wald
-  Moor- / Heidellandschaft
-  Sandgebiet
-  Strand / Düne
-  Hintergrund

